

			ČÍSLO SOUPRAVY:
REVIZE Č.	DATUM	ZMĚNA	

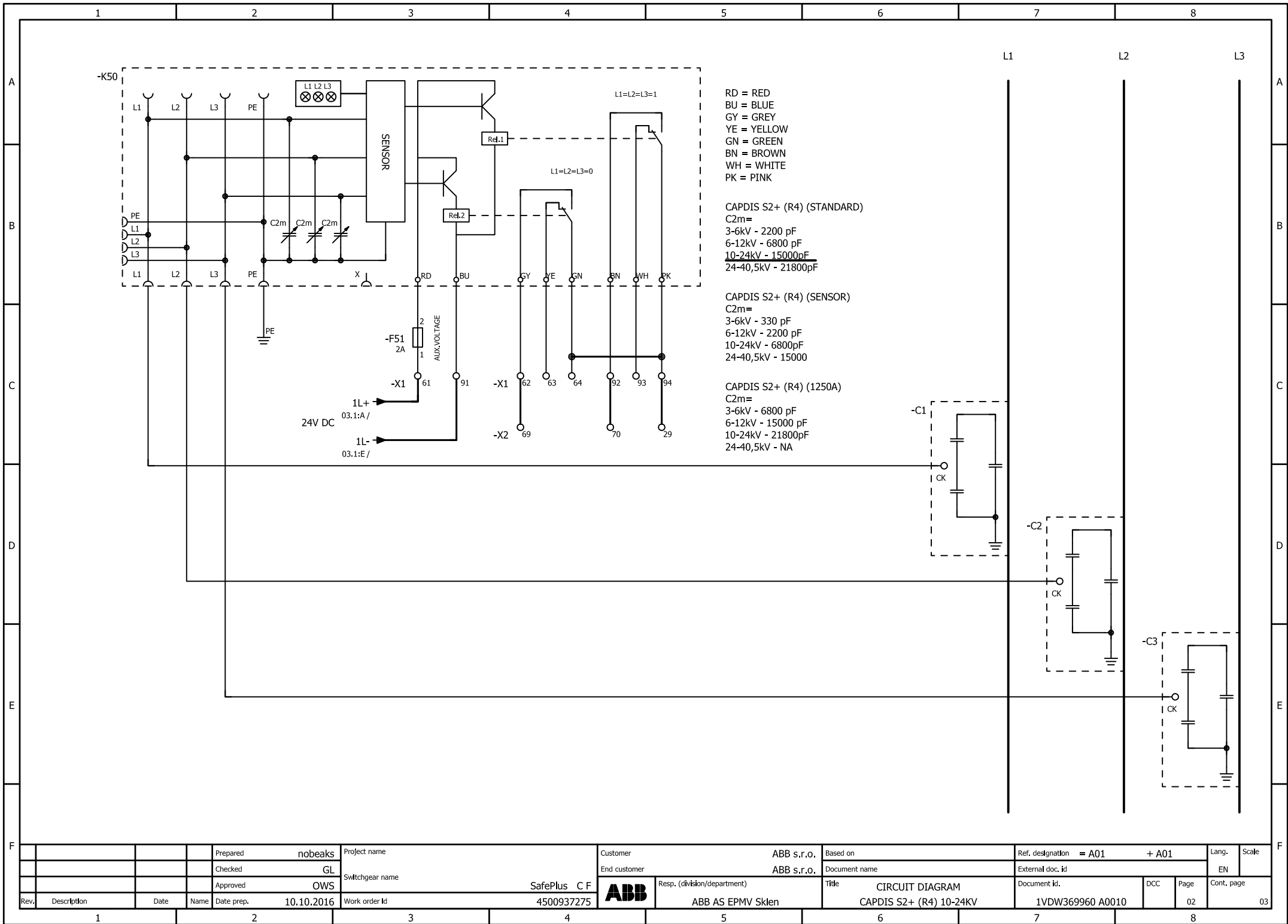


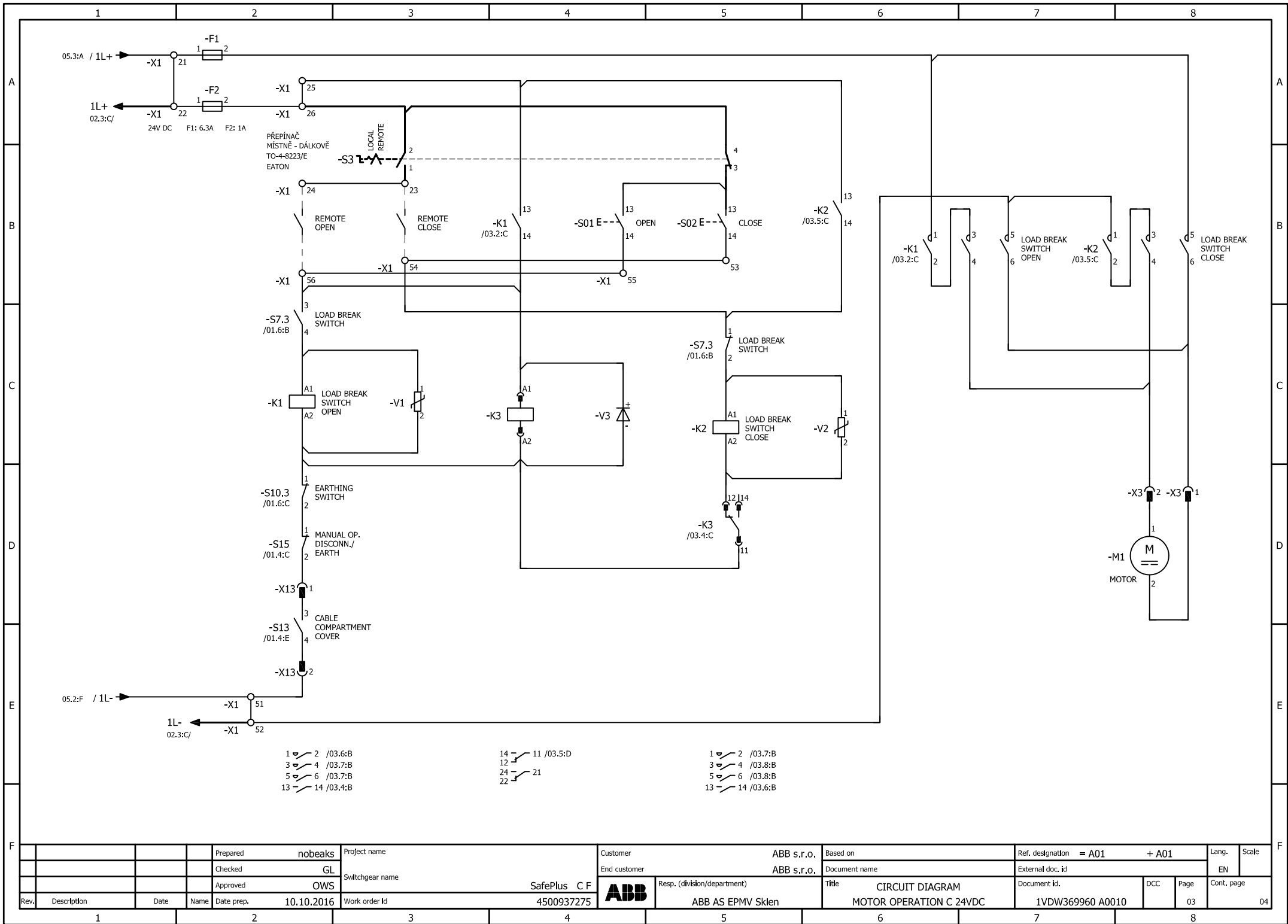
**SUDOP BRNO**

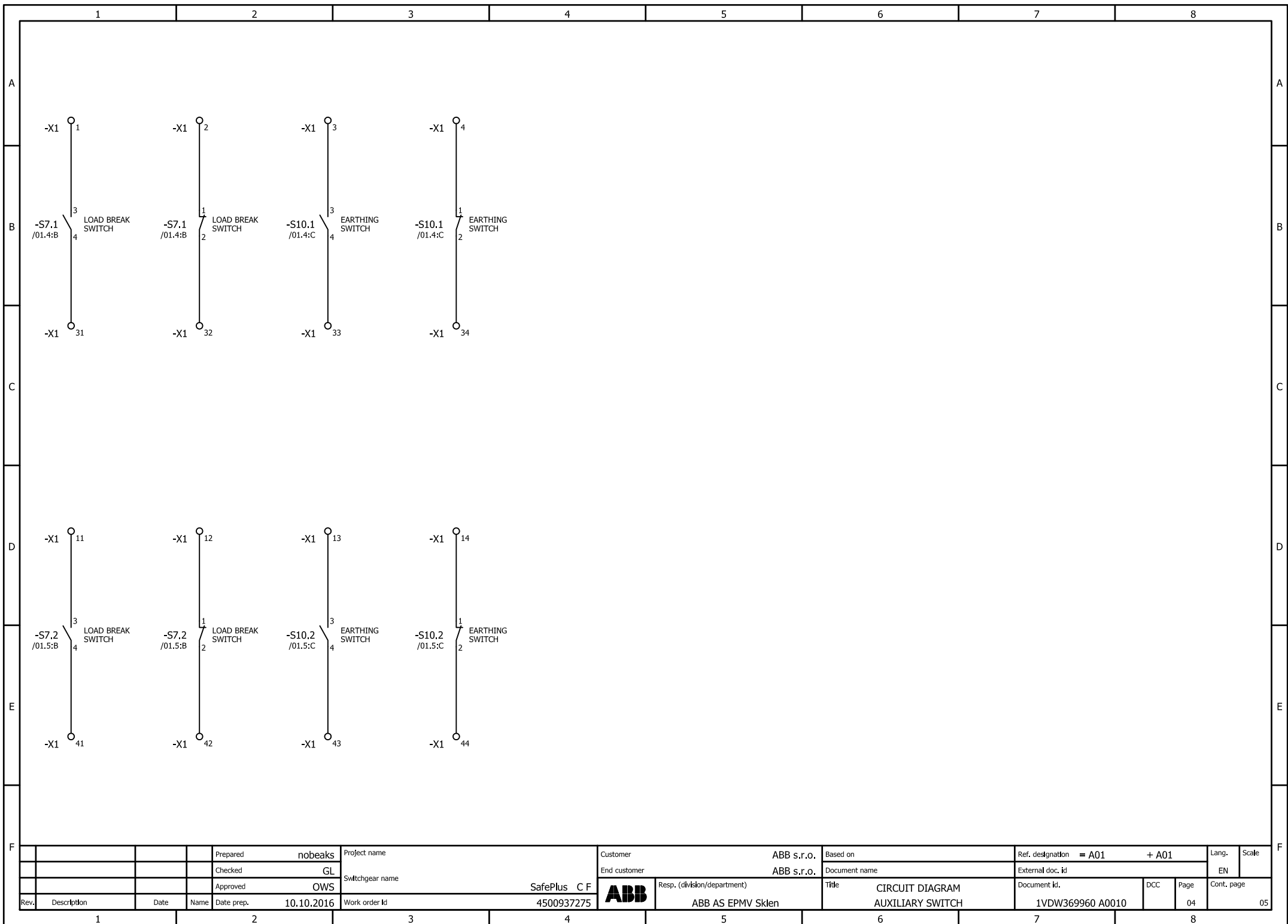
**SUDOP BRNO, spol. s r.o.**  
**Kounicova 26**  
**611 36 Brno**

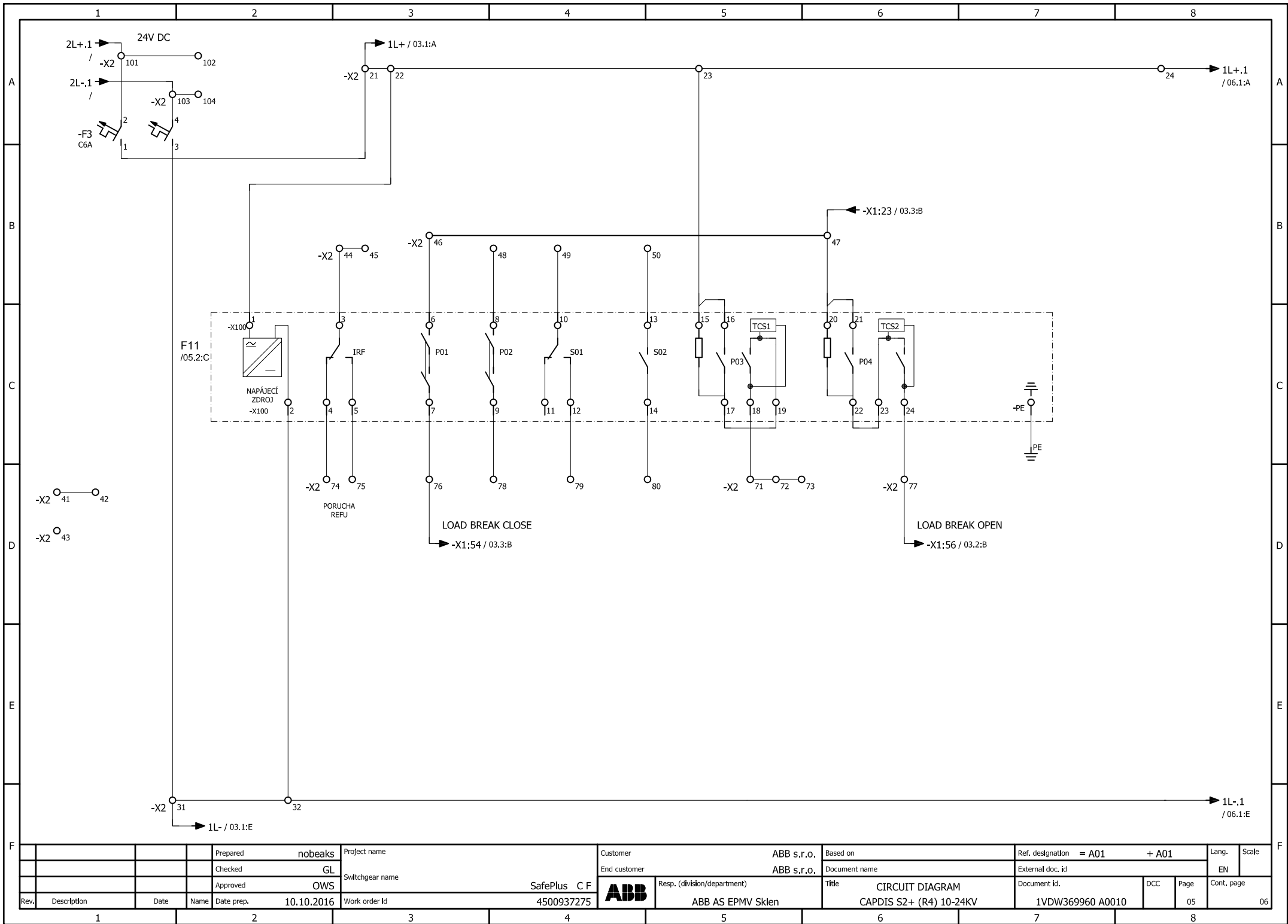
OBJEDNAVATEL:	Správa železnic, státní organizace, Dlážděná 1003/7, 110 00 Praha 1 Stavební správa východ (organizační jednotka)		tel. : +420 972 625 804 E-mail: sudop@sudop-brno.cz	
PROFESNÍ SKUPINA:	24 SILNOPROUD	VEDOUcí PROF. SKUPINY Ing. Jan Zářecký	ŘEDITEL Ing. Kamil Chmela	
ODPOVĚDNÝ PROJ. ZAKÁZKY Ing. Radoslav Molák	ODPOVĚDNÝ PROJ. PS, SO Ing. Jan Zářecký <i>Galucef</i>	NAVRHL, VYPRACOVAL Ing. Ondřej Šebesta <i>Šebesta</i>	KONTROLOVAL Ing. Jan Zářecký <i>Galucef</i>	
KRAJ: Jihomoravský	POVĚŘENÝ OÚ: Židlochovice		STUPEŇ: DSPS	
Modernizace a elektrizace trati Hrušovany u Brna - Židlochovice PS 01-13-01 Žst. Hrušovany u Brna, trafostanice 22/0,4kV			ZAK. ČÍSLO 20059-01-0820	ARCH. ČÍSLO 2020240032
			MĚŘÍTKO	POČET FORMÁTŮ
Rozvaděč 22kV			DATUM: 10/2020	
			ČÁST DOKUM. D.3.5.1	PŘÍLOHA 3

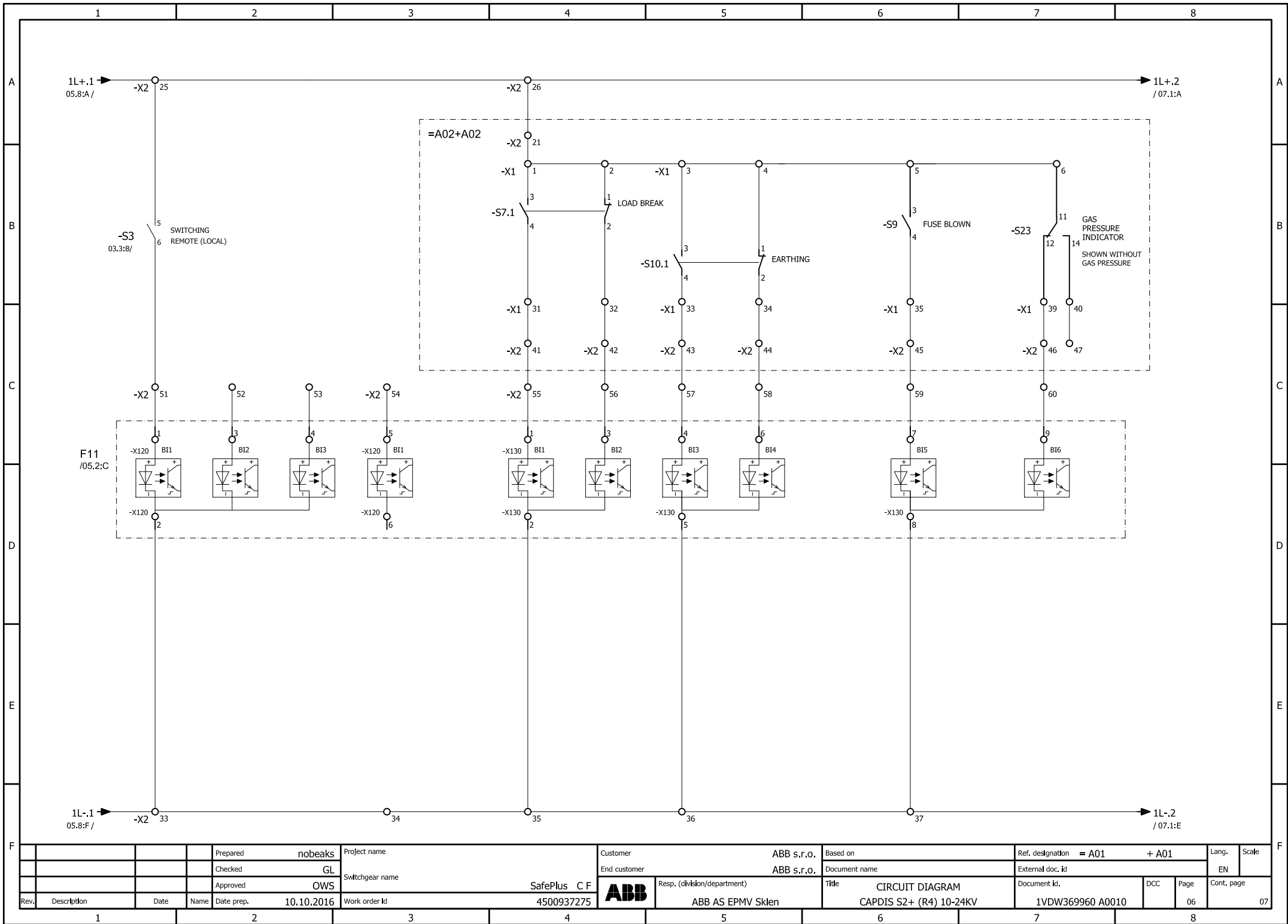




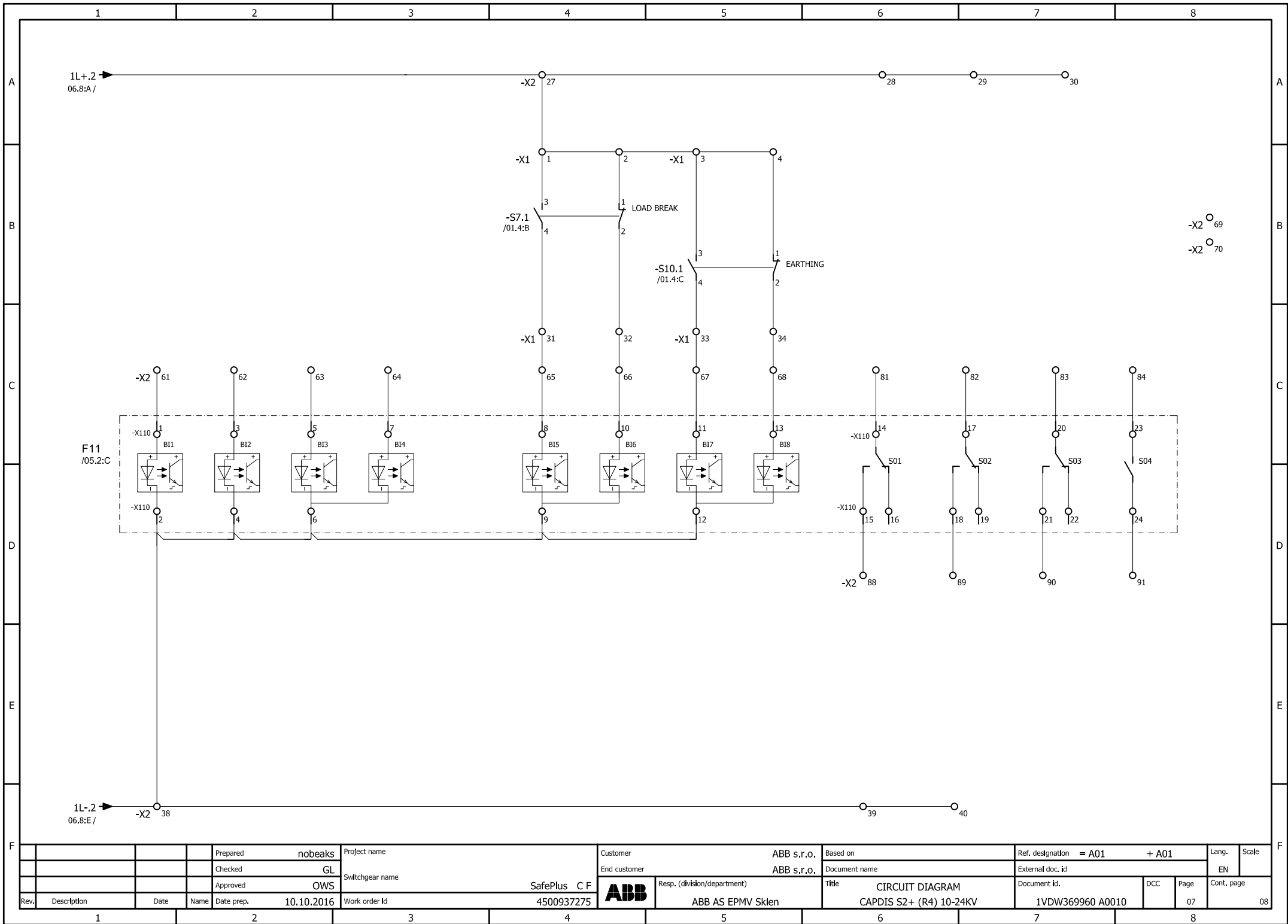








Prepared		nobeaks	Project name		Customer		ABB s.r.o.		Based on		Ref. designation		= A01 + A01		Lang.	Scale
Checked		GL	Switchgear name		End customer		ABB s.r.o.		Document name		External doc. id				EN	
Approved		OVS			Resp. (division/department)		ABB AS EPMV Sklen		Title		Document id.		DCC	Page	Cont. page	
Rev.	Description	Date	Name	Date prep.	10.10.2016	Work order id	4500937275			CIRCUIT DIAGRAM		1VDW369960 A0010		06	07	



				Prepared	nobeaks	Project name	Customer		ABB s.r.o.	Based on		Ref. designation = A01 + A01		Lang.	Scale		
				Checked	GL		Switchgear name	End customer		ABB s.r.o.	Document name		External doc. id		EN		
				Approved	OWS			SafePlus C F		Resp. (division/department)	ABB AS EPMV Sklen	Title	CIRCUIT DIAGRAM CAPDIS S2+ (R4) 10-24KV	Document id.	1VDW369960 A0010	DCC	Page
Rev.	Description	Date	Name	Date prep.	10.10.2016	Work order Id	4500937275										



	1	2	3	4	5	6	7	8					
A	Parts list								A				
B	Device tag	Part number	Function text	Designation	Placement	Manufacturer		Pos					
	-C1	NHP 201699R0001		BUSHING WITH CAP. VOLTAGE IND 400 BOLT INTERFACE C	/02.6:C	ABB							
	-C2	NHP 201699R0001		BUSHING WITH CAP. VOLTAGE IND 400 BOLT INTERFACE C	/02.7:D	ABB							
	-C3	NHP 201699R0001		BUSHING WITH CAP. VOLTAGE IND 400 BOLT INTERFACE C	/02.8:E	ABB							
C	-F1	NHSN706013P0124		FUSE 250V 6,3A FAST 5x20mm	/03.2:A	SIBA							
	-F1	NHSN722056P0001		FUSE BASE UK-SI	/03.2:A	PHOENIX							
	-F2	NHSN706013P0116		FUSE 250V 1A FAST	/03.2:A	SIBA							
	-F2	NHSN722056P0001		FUSE BASE UK-SI	/03.2:A	PHOENIX							
D	-F51	NHSN706013P0119	2A	FUSE 250V 2A FAST	/02.3:C	SIBA							
	-F51	NHSN722056P0001	2A	FUSE BASE UK-SI	/02.3:C	PHOENIX							
	-K1	GJL1213001R0101	LOAD BREAK SWITCH OPEN	CONTACTOR BC6-30-10 BC6-30-10 24V DC	/03.2:C	ABB							
	-K2	GJL1213001R0101	LOAD BREAK SWITCH CLOSE	CONTACTOR BC6-30-10 BC6-30-10 24V DC	/03.5:C	ABB							
E	-K3	NHSN710013P0011		RELAY RT 424024 24V DC	/03.4:C	SCHRACK							
	-K50	3WAA021500P0001		CAPDIS S2+(R4) 3-40,5kV C2m = 10-24kV - 15000 pF	/02.1:A	KRIES							
F									F				
			Prepared nobeaks	Project name	Customer ABB s.r.o.	Based on		Ref. designation = A01 + A01	Lang.	Scale			
			Checked GL	Switchgear name	End customer ABB s.r.o.	Document name		External doc. id	EN				
			Approved OWS	SafePlus C F	Resp. (division/department)	Title		Document id.	DCC	Page			
	Rev.	Description	Date	Name	Date prep. 10.10.2016	Work order Id	4500937275	ABB	ABB AS EPMV Sklen	CIRCUIT DIAGRAM PARTS LIST	1VDW369960 A0010	09	Cont. page 10
	1	2	3	4	5	6	7	8					

	1	2	3	4	5	6	7	8	
A	Parts list								A
	Device tag	Part number	Function text	Designation	Placement	Manufacturer	Pos		
	-M1	NHP 201491R0001	MOTOR	MOTOR W/GEAR 24V DC	/03.8:D	ABB			
B	-Q1/-Q8	NHP 102099R0001		LOAD BREAK SWITCH / EARTH SWITCH CFE 12/24	/01.2:B	ABB			
	-Q1/-Q8	NHP 101935R0001		SWITCH MECHANISM 3PKE EARTHING SWITCH ES	/01.2:B	ABB			
	-S01		OPEN	PUSHBUTTON CONTACT OPERATED BY PUSHING	/03.4:B	ABB			
	-S02		CLOSE	PUSHBUTTON CONTACT OPERATED BY PUSHING	/03.5:B	ABB			
C	-S3			SWITCH - OPERATING ELEMENT, BY ROTATION	/03.3:B	EATON			
	-S7.1	NZN 000859P0011	LOAD BREAK SWITCH	AUXILIARY SWITCH 1NO+1NC	/01.4:B	SHANGHAI JIADING			
	-S7.2	NZN 000859P0011	LOAD BREAK SWITCH	AUXILIARY SWITCH 1NO+1NC	/01.5:B	SHANGHAI JIADING			
D	-S7.3	NZN 000859P0011	LOAD BREAK SWITCH	AUXILIARY SWITCH 1NO+1NC	/01.6:B	SHANGHAI JIADING			
	-S10.1	NZN 000859P0011	EARTHING SWITCH	AUXILIARY SWITCH 1NO+1NC	/01.4:C	SHANGHAI JIADING			
	-S10.2	NZN 000859P0011	EARTHING SWITCH	AUXILIARY SWITCH 1NO+1NC	/01.5:C	SHANGHAI JIADING			
E	-S10.3	NZN 000859P0011	EARTHING SWITCH	AUXILIARY SWITCH 1NO+1NC	/01.6:C	SHANGHAI JIADING			
	-S13	NZN 000859P0011	CABLE COMPARTMENT COVER	AUXILIARY SWITCH 1NO+1NC	/01.4:E	SHANGHAI JIADING			
F									F
			Prepared nobeaks	Project name	Customer ABB s.r.o.	Based on	Ref. designation = A01 + A01	Lang.	Scale
			Checked GL	Switchgear name	End customer ABB s.r.o.	Document name	External doc. id	EN	
			Approved OWS	SafePlus C F	Resp. (division/department)	Title CIRCUIT DIAGRAM	Document id.	DCC	Page
Rev.	Description	Date	Name	Date prep. 10.10.2016	Work order Id. 4500937275	ABB AS EPMV Sklen	1VDW369960 A0010	10	11
	1	2	3	4	5	6	7	8	

	1	2	3	4	5	6	7	8										
A	Parts list								A									
B	Device tag	Part number	Function text	Designation	Placement	Manufacturer		Pos										
	-S15	NZN 000859P0011	MANUAL OP. DISCONN./ EARTH	AUXILIARY SWITCH 1NO+1NC	/01.4:C	SHANGHAI JIADING												
	-V1	NHSN716001P0001		SURGE ARRESTER VDR BC6/48 48V AC/DC	/03.3:C	MURRELEKTRONIK												
	-V2	NHSN716001P0001		SURGE ARRESTER VDR BC6/48 48V AC/DC	/03.6:C	MURRELEKTRONIK												
C	-V3	NHSN710013P0050		BY-PASS DIODE	/03.4:C	SCHRACK												
	-X1	NHSN722028P0001		MBKKB 2,5 TERMINAL	/02.3:C;/02.4:C;/02.5:C;/03.1:A /03.2:A;/03.2:B;/03.2:E;/03.3:B /03.4:B;/03.5:B;/04.1:A;/04.1:C	Phoenix												
	-X3	NHSN620018P0022/32/02/12		MINI-FIT MOLEX PLUG 2P MINI-FIT HOUSE MALE/FEMALE 2P MINI-FIT TERMINAL FEMALE/MALE	/03.8:D	MOLEX												
	-X13	NHSN620018P0022/32/02/12		MINI-FIT MOLEX PLUG 2P MINI-FIT HOUSE MALE/FEMALE 2P MINI-FIT TERMINAL FEMALE/MALE	/03.2:D	MOLEX												
D	-X2	NHSN722028P0001		UK5N TERMINAL	/05.1,2:A	Phoenix												
	-X2	NHSN722028P0001		MBKKB 2,5 TERMINAL	/02.3:C;/02.4:C;/02.5:C;/03.1:A /03.2:A;/03.2:B;/03.2:E;/03.3:B /03.4:B;/03.5:B;/04.1:A;/04.1:C	Phoenix												
E									E									
F									F									
				Prepared nobeaks	Project name		Customer ABB s.r.o.	Based on	Ref. designation = A01 + A01	Lang.	Scale							
				Checked GL	Switchgear name		End customer ABB s.r.o.	Document name	External doc. id	EN								
				Approved OWS	SafePlus C F		Resp. (division/department)	Title CIRCUIT DIAGRAM	Document id.	DCC	Page	Cont. page						
	Rev.	Description	Date	Name	Date prep.	10.10.2016	Work order Id	4500937275	ABB	ABB AS EPMV Sklen								
	1			2			3		4		5		6		7		8	

TERMINAL LIST									
-X1									
DEVICE DESIGNATION		POTENTIAL/ COLOR		WIRE JUMPER		POTENTIAL/ COLOR		SADDLE JUMPER	
DEVICE PIN.	DEVICE DESIGNATION	POTENTIAL/ COLOR	WIRE JUMPER	POTENTIAL/ COLOR	SADDLE JUMPER	DEVICE PIN.	DEVICE DESIGNATION	POTENTIAL/ COLOR	WIRE JUMPER
27	-X2					1	-S7.1		
						2	-S7.1		
						3	-S10.1		
						4	-S10.1		
						11	-S7.2		
						12	-S7.2		
						13	-S10.2		
						14	-S10.2		
						21	-F1		
61	-X1					22	-F2		
47	-X2					23	-S3		
						24			
						25	-K1		
2	-S3					26	-F2		
65	-X2					31	-S7.1		
66	-X2					32	-S7.1		
67	-X2					33	-S10.1		
68	-X2					34	-S10.1		
						41	-S7.2		
						42	-S7.2		
						43	-S10.2		
						44	-S10.2		
						51	-X13		
91	-X1					52	-K1		
						53	-S02		
						54	-S7.3		
						55	-S01		
						56	-S7.3		
22	-X1					61	-F51		
69	-X2					62	-K50		
						63	-K50		
94	-X1					64	-K50		
52	-X1					91	-K50		
70	-X2					92	-K50		

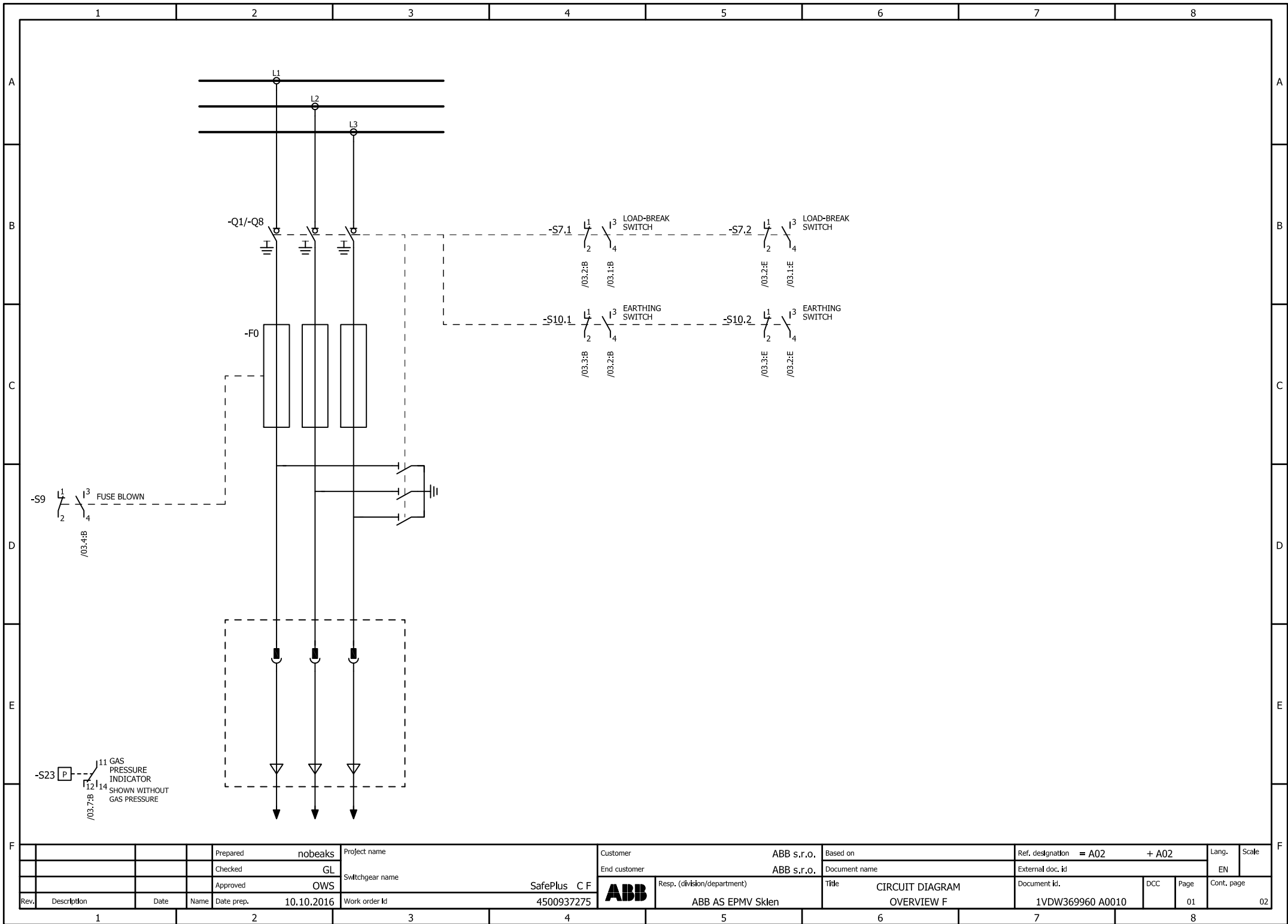
Prepared		nobeaks		Project name		Customer		ABB s.r.o.		Based on		Ref. designation		= A01		+ A01		Lang.		Scale	
Checked		GL		Switchgear name		End customer		ABB s.r.o.		Document name		External doc. id						EN			
Approved		OWS		SafePlus C F		Res. (division/department)		ABB AS EPMV Sklen		Title		CIRCUIT DIAGRAM		Document id.		DCC		Page		Cont. page	
Rev.		Description		Date		Name		Date prep.		10.10.2016		Work order Id.		4500937275				12		13	

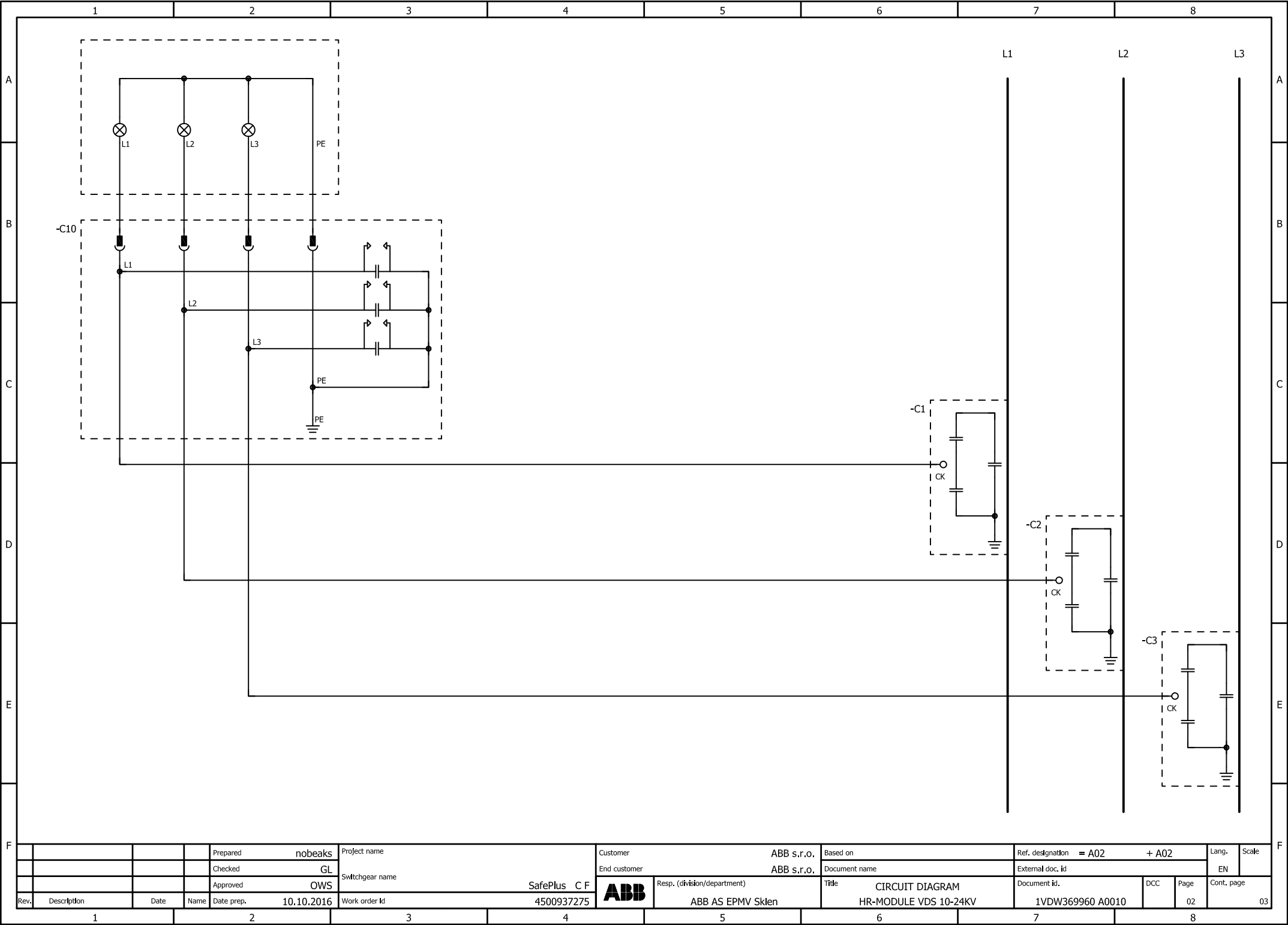
[illegible]

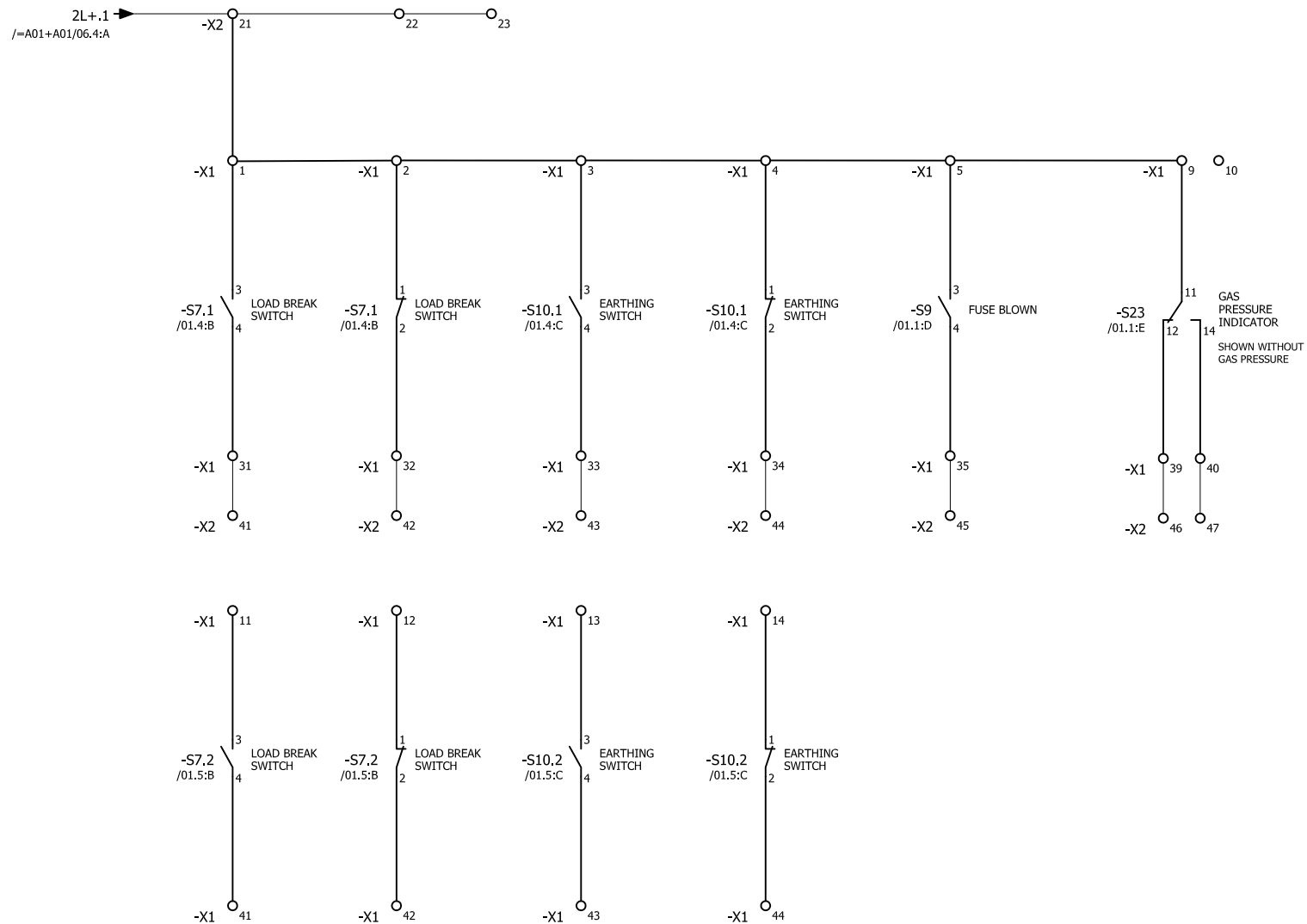
[illegible]


F		m		D		C		B		A																	
TERMINAL LIST																											
-X2																											
F		m		D		C		B		A																	
DEVICE PIN.		DEVICE DESIGNATION		WIRE JUMPER		POTENTIAL/ COLOR		SADDLE JUMPER		POTENTIAL/ COLOR		DEVICE DESIGNATION		DEVICE PIN.		PAGE		TERMINAL TYPE:									
42	=A02+A02/03.2:D/-X2												-F11-X130	3	/06.4:C	MBKKB 2,5											
43	=A02+A02/03.3:D/-X2												-F11-X130	4	/06.5:C	MBKKB 2,5											
44	=A02+A02/03.4:D/-X2												-F11-X130	6	/06.5:C	MBKKB 2,5											
45	=A02+A02/03.5:D/-X2												-F11-X130	7	/06.6:C	MBKKB 2,5											
46	=A02+A02/03.6:D/-X2												-F11-X130	9	/06.7:C	MBKKB 2,5											
													-F11-X110	1	/07.1:C	MBKKB 2,5											
													-F11-X110	3	/07.2:C	MBKKB 2,5											
													-F11-X110	5	/07.2:C	MBKKB 2,5											
													-F11-X110	7	/07.2:C	MBKKB 2,5											
31													-F11-X110	8	/07.4:C	MBKKB 2,5											
32													-F11-X110	10	/07.4:C	MBKKB 2,5											
33													-F11-X110	11	/07.5:C	MBKKB 2,5											
34													-F11-X110	13	/07.5:C	MBKKB 2,5											
															/07.8:B	MBKKB 2,5											
															/07.8:B	MBKKB 2,5											
													-F11-X100	18	/05.5:D	MBKKB 2,5											
															/05.5:D	MBKKB 2,5											
															/05.6:D	MBKKB 2,5											
													-F11-X100	4	/05.2:D	MBKKB 2,5											
													-F11-X100	5	/05.3:D	MBKKB 2,5											
54													-F11-X100	7	/05.3:D	MBKKB 2,5											
56													-F11-X100	24	/05.6:D	MBKKB 2,5											
													-F11-X100	9	/05.4:D	MBKKB 2,5											
													-F11-X100	12	/05.4:D	MBKKB 2,5											
													-F11-X100	14	/05.5:D	MBKKB 2,5											
													-F11-X110	14	/07.6:C	MBKKB 2,5											
													-F11-X110	17	/07.6:C	MBKKB 2,5											
													-F11-X110	20	/07.7:C	MBKKB 2,5											
													-F11-X110	23	/07.7:C	MBKKB 2,5											
													-F11-X130	10	/08.2:B	MBKKB 2,5											
													-F11-X130	13	/08.2:B	MBKKB 2,5											
													-F11-X130	16	/08.3:B	MBKKB 2,5											
													-F11-X110	15	/07.6:D	MBKKB 2,5											
													-F11-X110	18	/07.6:D	MBKKB 2,5											
													-F11-X110	21	/07.7:D	MBKKB 2,5											
Prepared nobeaks		Project name		Customer ABB s.r.o.		Based on		Ref. designation = A01 + A01		Lang.		Scale															
Checked GL		Switchgear name		End customer ABB s.r.o.		Document name		External doc. id		EN																	
Approved OWS		SafePlus C F		Resp. (division/department)		Title		Document id.		DCC		Page		Cont. page													
Rev.		Description		Date		Name		Date prep.		10.10.2016		Work order id		4500937275		ABB AS EPMV Sklen		CIRCUIT DIAGRAM		TERMINAL DIAGRAM		1VDW369960 A0010		15		16	
1		2		3		4		5		6		7		8													

1		2		3		4		5		6		7		8									
A		B		C		D		E		F		A		B		C		D		E		F	
TERMINAL LIST																							
-X2																							
TERMINAL TYPE:		PAGE		DEVICE PIN.		DEVICE DESIGNATION		POTENTIAL/ COLOR		SADDLE JUMPER		WIRE JUMPER		POTENTIAL/ COLOR		DEVICE DESIGNATION		DEVICE PIN.					
MBKKB 2,5		/07.8:D		24		-F11-X110		91		-				91									
MBKKB 2,5		/08.2:C		11		-F11-X130		92		-				92									
MBKKB 2,5		/08.2:C		14		-F11-X130		93		-				93									
MBKKB 2,5		/08.3:C		17		-F11-X130		94		-				94									
MBKKB 2,5		/08.8:B						95		-				95									
MBKKB 2,5		/08.8:B						96		-				96									
MBKKB 2,5		/08.8:B						97		-				97									
MBKKB 2,5		/08.8:B						98		-				98									
MBKKB 2,5		/08.8:B						99		-				99									
MBKKB 2,5		/08.8:B						100		-				100									
UK 5N		/05.1:A		2		-F3		101		●		●		101									
UK 5N		/05.2:A						102						102									
UK 5N		/05.1:A		4		-F3		103		●		●		103									
UK 5N		/05.2:A						104						104									







			Prepared	nobeaks	Project name		Customer		ABB s.r.o.	Based on		Ref. designation = A02 + A02		Lang.	Scale							
			Checked	GL	Switchgear name		End customer		ABB s.r.o.	Document name		External doc. id		EN								
			Approved	OVS	SafePlus C F			Resp. (division/department)		Title		Document id.		DCC	Page	Cont. page						
Rev.	Description	Date	Name	Date prep.	10.10.2016	Work order Id		4500937275	ABB AS EPMV Sklen		CIRCUIT DIAGRAM AUXILIARY SWITCH		1VDW369960 A0010			03	04					
1			2		3			4			5			6			7			8		

1																2																3																4																5																6																7																8																																																																																															
Parts list																																																																																																																																																																																																															
A																Device tag																Part number																Function text																Designation																																Placement																Manufacturer																																Pos																																																															
																-C1																NHP 201532R0001																																BUSHING WITH CAP. VOLTAGE IND 200 PLUG INTERFACE A																																/02.6:C																ABB																																																																																															
B																-C2																NHP 201532R0001																																BUSHING WITH CAP. VOLTAGE IND 200 PLUG INTERFACE A																																/02.7:D																ABB																																																																																															
																-C3																NHP 201532R0001																																BUSHING WITH CAP. VOLTAGE IND 200 PLUG INTERFACE A																																/02.8:E																ABB																																																																																															
C																-C10																NHP 201701R0010																																VOLTAGE INDICATOR HR-MODUL 10-24kV C/F-CUBICLE																																/02.1:B																MAXETA																																																																																															
																-F0																NHP 101878R0001																																FUSE BASE MEDIUM VOLTAGE FUSE SAFE0-F																																/01.2:C																ABB																																																																																															
D																-Q1/-Q8																NHP 101939R0001																																FUSED LOAD SWITCH/ EARTHING SWITCH CFE-F 12/24																																/01.2:B																ABB																																																																																															
																-Q1/-Q8																NHP 101941R0001																																SWITCH MECHANISM 3PAE EARTHING SWITCH ES																																/01.2:B																ABB																																																																																															
E																-S7.1																NZN 000859P0011																LOAD BREAK SWITCH																AUXILIARY SWITCH 1NO+1NC																																/01.4:B																SHANGHAI JIADING																																																																																															
																-S7.2																NZN 000859P0011																LOAD BREAK SWITCH																AUXILIARY SWITCH 1NO+1NC																																/01.5:B																SHANGHAI JIADING																																																																																															
F																-S9																NZN 000859P0011																FUSE BLOWN																AUXILIARY SWITCH 1NO+1NC																																/01.1:D																SHANGHAI JIADING																																																																																															
																-S10.1																NZN 000859P0011																EARTHING SWITCH																AUXILIARY SWITCH 1NO+1NC																																/01.4:C																SHANGHAI JIADING																																																																																															
																-S10.2																NZN 000859P0011																EARTHING SWITCH																AUXILIARY SWITCH 1NO+1NC																																/01.5:C																SHANGHAI JIADING																																																																																															
																-S23																2RAA020260A0001																GAS PRESSURE INDICATOR																GAS PRESSURE INDICATOR GMD1 W/CHANGEVER CONTACT																																/01.1:E																ELECTRONSYSTEM																																																																																															
F																																																Prepared																nobeaks																Project name																Customer																ABB S,r.O.																Based on																Ref. designation																= A02																+ A02																Lang.								Scale							
																																																Checked																GL																Switchgear name																End customer																ABB S,r.O.																Document name																External doc. id																EN																																															
																																																Approved																OWS																SafePlus C F																Resp. (division/department)																Title																Document id.																DCC																Page																Cont. page																															
																Rev.																Description																Date																Name																Date prep.																10.10.2016																Work order Id																4500937275																ABB AS EPMV Sklen																CIRCUIT DIAGRAM PARTS LIST																1VDW369960 A0010																04															
1																2																3																4																5																6																7																8																																																																																															



[illegible]

1		2		3		4		5		6		7		8													
A		B		C		D		E		F		A		B		C		D		E		F					
TERMINAL LIST																											
-X2																											
DEVICE DESIGNATION		POTENTIAL/ COLOR		WIRE JUMPER		SADDLE JUMPER		POTENTIAL/ COLOR		DEVICE DESIGNATION		DEVICE PIN.		PAGE		TERMINAL TYPE:											
26		=A01+A01/06.4/A/-X2						21		-X1		1		/03.2:A		MBKKB 2,5											
								22						/03.2:A		MBKKB 2,5											
								23						/03.3:A		MBKKB 2,5											
55		=A01+A01/06.4/C/-X2						41		-X1		31		/03.2:D		MBKKB 2,5											
56		=A01+A01/06.4/C/-X2						42		-X1		32		/03.2:D		MBKKB 2,5											
57		=A01+A01/06.5/C/-X2						43		-X1		33		/03.3:D		MBKKB 2,5											
58		=A01+A01/06.5/C/-X2						44		-X1		34		/03.4:D		MBKKB 2,5											
59		=A01+A01/06.6/C/-X2						45		-X1		35		/03.5:D		MBKKB 2,5											
60		=A01+A01/06.7/C/-X2						46		-X1		39		/03.6:D		MBKKB 2,5											
								47		-X1		40		/03.6:D		MBKKB 2,5											
								48						/03.8:B		MBKKB 2,5											
								49						/03.8:B		MBKKB 2,5											
Rev.		Description		Date		Name		Date prep.		2010.10.10		Work order Id		4500937275		ABB AS EPMV Sklen											
Prepared		nobeaks		Project name		Customer		ABB s.r.o.		Based on		Ref. designation		= A02 + A02		Lang.		Scale									
Checked		GL		Switchgear name		End customer		ABB s.r.o.		Document name		External doc. id				EN											
Approved		OWS		SafePlus C F		Resp. (division/department)		ABB		Title		CIRCUIT DIAGRAM		Document id.		DCC		Page		Cont. page							
												TERMINAL DIAGRAM		1VDW369960 A0010				07									
1		2		3		4		5		6		7		8													